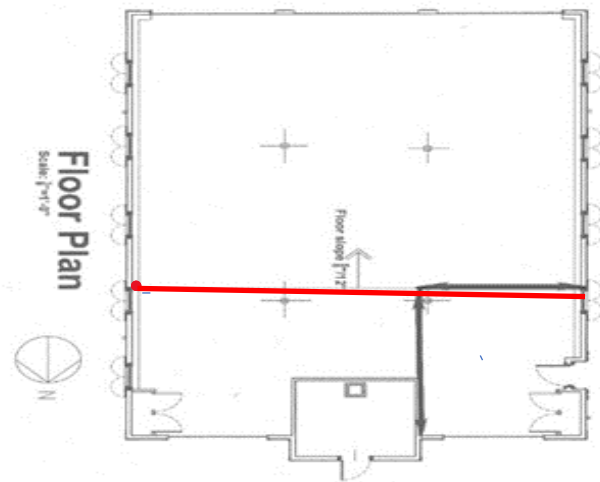




**Before Construction** the museum had a smaller viewing and exhibit area.

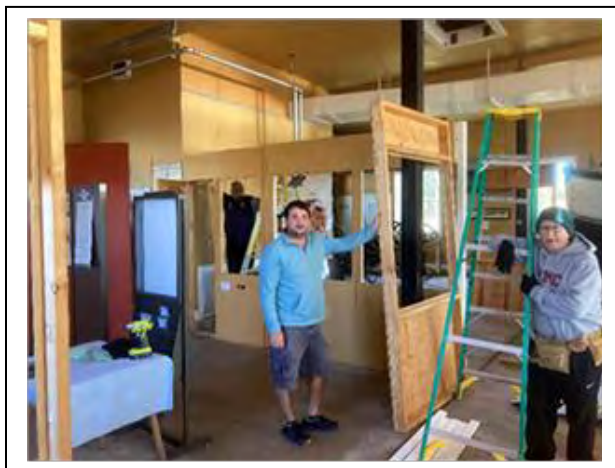


**Eagle Harbor Life Saving Station**

The **black line** in the floor plan of the Eagle Harbor Life Saving Station is the walled area **BEFORE** improvements.

The **red line** shows the viewing wall location **AFTER** the construction project was completed.

**Demolition** - Removal of existing wall was done by volunteers--  
Kyle Cinelli and Jim Huovinen (left picture) and Dave Pehoda, Jr (right picture)



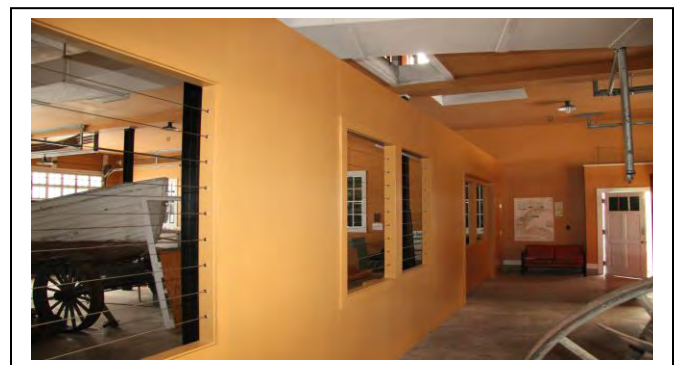
**Wall Construction Pictures:** Johnson Contracting framed a new interior wall with some sections built in 4-foot lengths so that they can be removed for access to the boats and equipment.



This is the completed view of the viewing wall across the full length of the boathouse



Expanded Display Area Opposite Viewing Wall



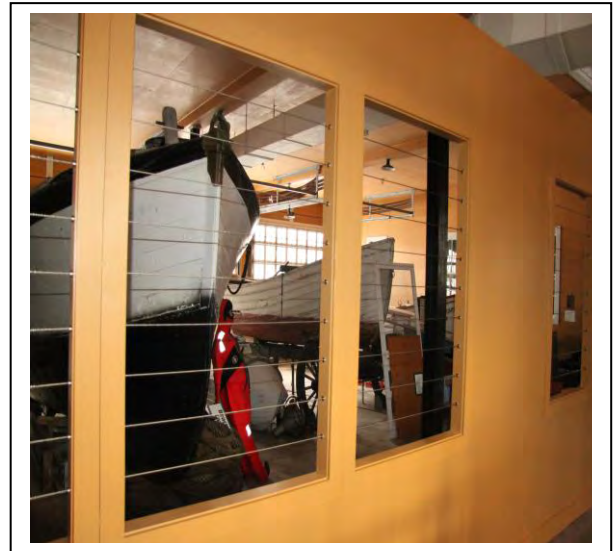
Expanded View of Surfboats

## Cable Wire System was installed in the Wall Openings

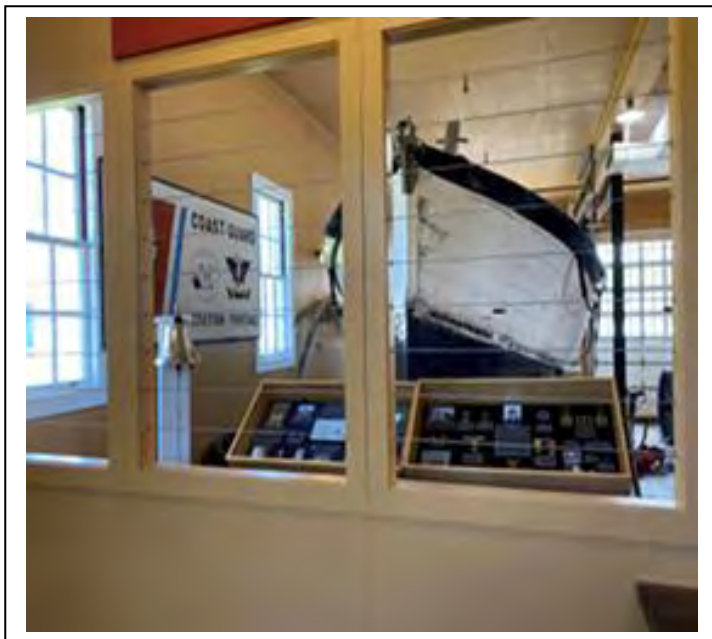
The original plan for installing safety plate glass in the wall openings was changed to a cable wire system because Joe Johnson and Mark Rowe determined it was the best option for optimal visitors' viewing.



Beginning of the construction of the wire system.



Finished opening within new wall



Full view of boats and exhibits



Close-up picture taken of Glaza exhibit through wall opening

**Man Door** was designed to blend in with the wall & built to provide KCHS volunteers with access to exhibits.



**Sliding Barn Door** was built to allow KCHS volunteers with access to boat storage area.

